

Town of Longmeadow

M a s s a c h u s e t t s



RKG Associates Inc.

Legend:

Natural Heritage & Endangered Species Program (NHESP)

- Potential Vernal Pools
- NHESP BioMap Core Habitat - the most viable habitat for rare species and natural communities in Massachusetts
- NHESP BioMap Supporting Natural Landscape
- Priority Sites of Rare Species Habitats

Open Space

- Municipal - Protected
- Municipal - Not Protected
- Private/Non-Profit - Protected
- Private/Non-Profit - Not Protected
- Inholding - unprotected property surrounded by protected property or recreation facility

National Wetlands Inventory

- Wetlands

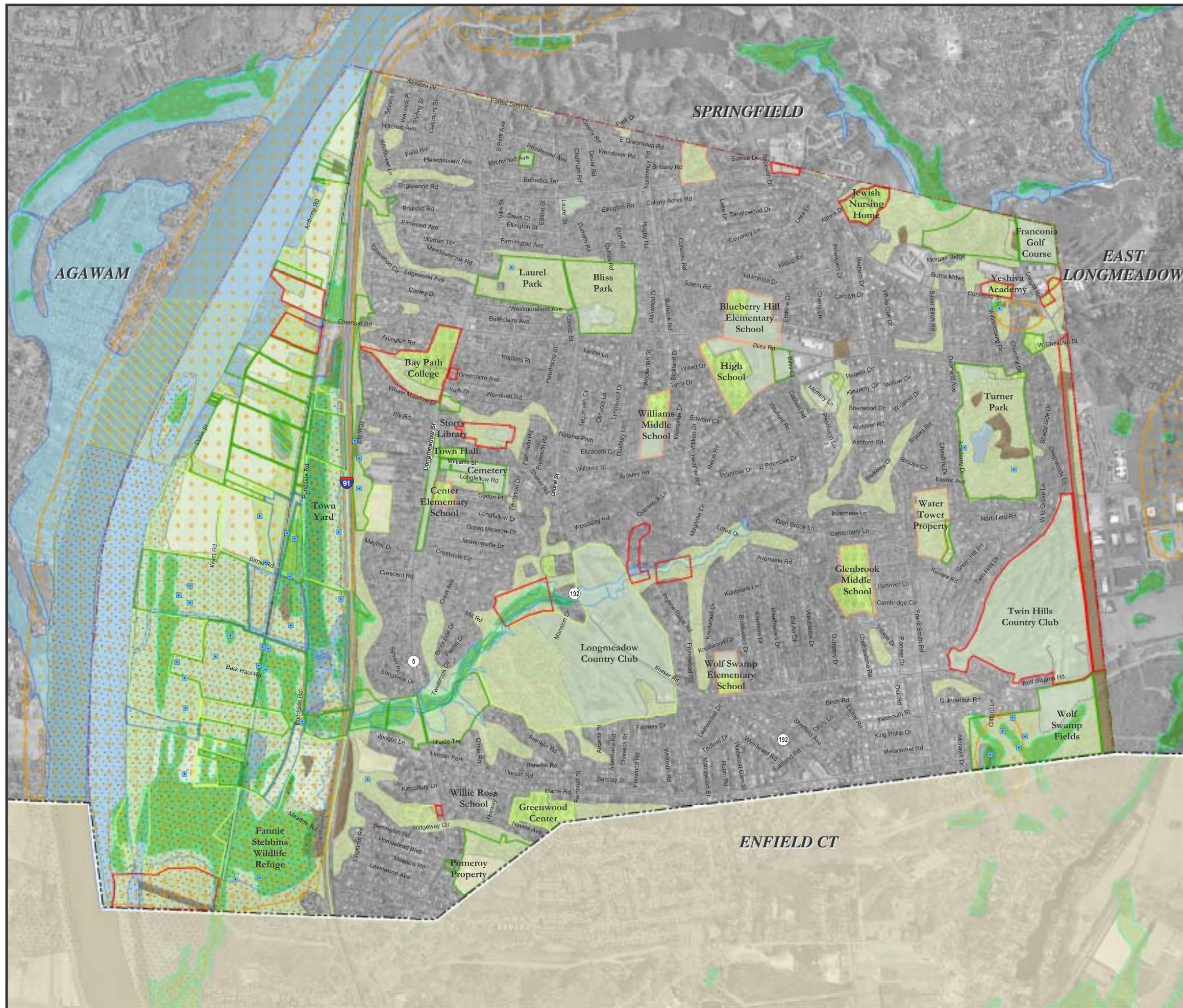
FEMA Q3 Floodplain

- 100 Year Floodplain

Land Use

- Cropland - Intensive
- Open - Abandoned Agricultural
- Open Space/Recreation
- Public/Parks
- Fresh water
- Forest

Sources: MassGIS, Town of Longmeadow



Land Use Suitability Map*

* Does not include small, vacant or under-utilized residential parcels

The information depicted on this map is for planning purposes only. It may not be adequate for legal boundary definition or regulatory interpretation.

