
MONTHLY REPORT

DECEMBER 2011

CLIENT: TOWN OF LONGMEADOW
LONGMEADOW SCHOOL BUILDING COMMITTEE

PROJECT: LONGMEADOW HIGH SCHOOL

I. TASKS COMPLETED DURING DECEMBER 2011

Administrative Activities

- 12.01.11 Construction Coordination Meeting
- 12.08.11 Construction Coordination Meeting
- 12.15.11 Construction Coordination Meeting
- 12.22.11 Construction Coordination Meeting
- 12.22.11 School Building Committee meeting
- 12.29.11 Construction Coordination Meeting

Construction Activities, per CSI Division

024119 Demo/Abatement - Essex/Abatement Solutions

The demolition of the natatorium entrance area along with the removal of the veneer on the exterior of the natatorium prior to the installation of the steel was completed.

033000 - Concrete - Francis Harvey and Sons, Inc.

The installation of the concrete at the slab on deck at the Orchestra pit, the small slab on grade area below it and the slab on grade at the bottom of the Orchestra pit was poured, the structural slab on deck over the alternate 3 storage basement and the slab on deck over the mechanical room was poured. The boy's locker room area in Area A was poured, the slab on grade at the sloped auditorium floor was poured, in area B the slab on grade south of the auditorium between the stair one location out and around to R3.8 line on the east wall of the paint classroom, on the north side of the auditorium on 12/20 a large section of floor was poured as well. The upper loading dock slab on grade was completed. The stair pans at stairs 4 and 5 were poured along with the mechanical pads in the mechanical basement. The infill at the elevator opening was completed along with the grouting of all the tube steel base plates to the foundation walls. The forming and pour of stair 14 adjacent to the alternate 3 storage basement on the west end of the terrace was completed.

050001 - Misc. Metals - United Steel /Avid Iron Works

The installation of stair 4 stringers and stair pans was completed this month. The installation of the flat bar required for additional support for the hollow metal frame assemblies on the interior got completed in area C.

051200 – Steel- United Steel

The corrective as required by RFI-0291 and RFI-0300 at the relieving angles on area C was worked on by United Steel this month ahead of the exterior wall framing and densglass installations. The corrective measures required at the three light monitors to the bent plate assemblies along the roof edge was completed.

051200 – Steel- United Steel & Eastern Steel Erectors

The installation of the metal decking over the curved sloped roof in area B was completed, the steel over the kitchen, cafeteria, corridor on the south side of the gym and the administration area was erected and fully detailed. The installation of the steel at the kitchen, cafeteria, corridor north of the auditorium and the administration area was completed. The erection of the gym got underway the last week of the month with the arrival of the truss scheduled for January. The installation of the steel at the boy's locker room got underway and was fully erected with detailing underway during the latter part of the month. The installation and completion of the erection and detailing of the steel on area B per the 9/13 data date schedule was Dec. 9th, the data date 11/28 shows erection of steel and decking in area B completed on Dec. 12th and detailing of area B and A boy's locker room area completed on January 10th.

061000 - General Trades – H. Carr

The mobilization and the installation of the roof edge blocking in area C was completed along with the roof edge blocking and soffit framing at the light monitors on the area C roof. The installation of the roof blocking in area C at the auditorium roofs got underway and will continue into early next month. The lower area B roof blocking also got underway at the end of the month. The installation of the exterior wall framing in area C from L line to the west end of the building was completed with the densglass sheathing installed. The installation of fire retardant reinforced poly over the window openings was also completed this month to complete a water tight exterior, except for the east end that required spray on fireproofing prior to framing not yet completed. The installation of the interior framing on the second floor of Area C was nearly all complete by the end of the month from L line west. The installation of the moisture resistant drywall material was used to complete the critical top of wall installations that will be inaccessible following the installation of duct got underway

075000 - Roofing – JD Rivet

The installation of the flat roofing over the entire roof of area C was installed with tie into the roof drains completed except for detailing and stripping in of the exterior edges remain. The installation of the insulation and the ice and water shield product on top of the plywood installed by the carpenters also got underway this month on the light monitors. The data date 11/28 schedule it shows the roofer being completed on the area C with the membrane roof on 12/14. The data date 9/13 schedule shows the same membrane roofing work completed on 11/30.

200000 - Plumbing- Adams Plumbing and Heating

The completion of the roof drain piping installations in area C was wrapped up this month. The installation of toilet carriers got underway and the sanitary piping associated with them, the installation of piping hangers for the lab piping to the second floor got underway along with the

installation of the acid waste piping and the extensive installation of kitchen underground piping was worked on in the latter part of the month. The installation of the floor cleanouts as the concrete slab on grade pours was worked on throughout the month. The hangers for the cold, hot and recirculating hot water in area C were installed and copper piping started to get placed in the hangers as well. A large delivery of steel pipe arrived on site later in the month for the installation of sanitary lines and the rain leader installations in area B.

230000 – HVAC – Adams Plumbing and Heating

The installation of radiant piping in the slab on grade in area B was worked on this month. The preparation of the radiant tubing for the next slab on grade pour at the main entry was completed on 12/19.

260000 – Electrical – Griffin Electric

The layout for the installation of equipment curbs in the main electrical switch gear room was completed. The installation of the aisle lighting conduit and boxes were installed in the auditorium sloped slab. The installation of the power distribution on level one of Area C got underway waiting for interior partitions. The power and fire alarm distribution on level 2 of Area C was worked on this month as well. The start of the in wall rough on level two in area C got underway as well. The last of the underground tie in and up turned conduit in room B191 was completed along with the pull of the feeder cable and the setup of the temporary power station in area B. The installation of temporary lighting in area B got underway with completed areas including the auditorium and the main entry area along with the southern rooms in area B. The distribution of temporary power stands got underway as the slab areas completed their wet curing cycle and the blankets were removed giving way to access for the other trades to start work.

310000 – Site – T&M Equipment

The completion of the slab on grade preparations with the laser guided grading was completed during this month. This included the sloped slab area in the auditorium, the slab on grade areas around the auditorium in area B everywhere remaining except at the kitchen. The installation of asphalt around the manholes and the catch basins as temporary protection during potential snow plowing this winter was completed along with an asphalt entrance apron on the west end of the site. The remaining back fill and compaction at the upper loading dock and in the area of the lower loading dock was completed. The installation of gravel on the north side of area C for access purposes was installed along with grading areas smooth for snow plowing before the ground freezes.

II. FORMAT ACCEPTABLE TO THE AUTHORITY

The monthly report has been submitted electronically through the MSBA web site. This document, along with a printed copy of the electronically submitted report, are submitted to the MSBA as supplemental information.

III. TASKS PLANNED FOR JANUARY 2012

Administrative Activities

- 01.05.12 Construction Coordination Meeting scheduled
- 01.12.12 Construction Coordination Meeting scheduled
- 01.19.12 Construction Coordination Meeting scheduled
- 01.19.12 School Building Committee Meeting scheduled
- 01.26.12 Construction Coordination Meeting scheduled

Construction Activities, per CSI Division

033000 – Concrete – Francis Harvey and Sons, Inc.

The installation of the slab on grade at the remaining kitchen and cafeteria along with the installation of the slab on deck in the auditorium at the mechanical rooms is expected to be completed this month. The installation of the walls and footings associated with the ramp and stair at the old natatorium stair entrance in the xH line area. The installation of concrete in the stair pans of stairs 1, 2 and 3 is expected to be completed. The installation of equipment pads in the area C electrical rooms and the slab on deck areas at the auditorium mechanical rooms.

042000 - Masonry – Champlain Masonry Inc.

The installation of the masonry walls in the mechanical basement got underway this week with the arrival of the material and the setup of the mixer in the areaway.

050001 – Misc. Metals – United Steel /Avid Iron Works

The installation of stair 1, 2, and 3 is expected to be completed this month. The installation of the flat bars in all the required locations in area C is expected to be completed. The installation of the ships ladders to the roof hatches in area C and area B in the mechanical room and from level one to level two to the auditorium mechanical rooms is expected to be completed. The ships ladders at the back stage area to the mezzanine and the cat walk is expected to be completed.

051200 – Steel – United Steel

The completion of the work associated with RFI-0300 and any remaining punchlist steel items in area C are expected to be completed.

051200 – Steel – United Steel/Eastern Steel Erectors

The completion of the gym and locker room steel in area B along with the last of the detailing associated with these steel installations is expected to be completed. This is expected to include the completion of the tie in to the existing building in area A at most of the 15 locations.

061000 - General Trades – H. Carr

The completion of the exterior wall framing at the roof transition between the upper and lower high roofs at the auditorium is expected to be completed. The installation of the parapet

blocking assemblies at both high roofs at the auditorium is expected to be completed. The wood blocking and parapet assemblies along the lower roof in area B is expected to be well underway. The blocking and roofing gutter blocking work along the curved sloped roof in area B be completed this month and the wood blocking and parapet at the administration area roof is expected to be well underway.

070001 – Waterproofing –Superior

The installation of the air vapor barrier at the light monitors and on the soffits the need to be completed for the enclosure is expected to get underway this month weather dependent.

075000 - Roofing – JD Rivet

The installation of the metal roofing on area C light monitors is expected to be completed this month. The installation of the two upper roofs at the auditorium and the lower roofs around the south side of the auditorium is expected to be underway as well.

078100 – Applied Fireproofing – H. Carr

The installation of applied fireproofing is expected to get underway next month.

210000 – Fire Protection – Cogswell

The start of the installation of the fire protection piping in area C is expected to get underway this month in area C in coordination with the plumbing and HVAC installations already underway.

220000 - Plumbing- Adams Plumbing and Heating

The installation of rain leader piping in area B following the sign off of the coordination drawings for those areas is expected to get underway this month. The installation of the acid waste, sanitary, gas, and water lines to the labs and the bathrooms is expected to move into full swing in area C this month.

230000 – HVAC – Adams Plumbing and Heating

The installation of the duct work in area C from L line west is expected to get underway this month. The installation of heat piping to the RTU locations in area C along with the piping to the exterior wall radiant piping is expected to continue this month as well on both the first and second levels of area C.

260000 – Electrical – Griffin Electrical

The installation of the in wall rough for the power, security, fire alarm, door hardware along with the AV and communications rough is expected to continue in Area C. The installation of the power distribution in area B is expected to also get underway as the roof and the exterior wall get closed up for a water tight envelope.

310000 – Site – T&M Equipment

This contractor is expected to be on site performing the removal to dumpsters of debris for the demolition contractor as some exterior wall veneer work is performed on area A. The backfill

and compaction of the kitchen area along with the cafeteria is expected to be completed along with the last drainage connection on the east side of the girl's locker room.

IV. PROJECT SCHEDULE

The overall project summary schedule dated December 19, 2011 is attached.

V. PROJECT BUDGET

Refer to attached Project Budget, dated December 31, 2011.

VI. CHANGE ORDERS AND POTENTIAL CHANGE ORDERS

No Change Orders were approved this month. Some Proposed change orders are under process.

VII. CASH FLOW PROJECTIONS

Refer to attached Cash Flow Projection, dated December 31, 2011.

VIII. CONTRACTOR'S SAFETY PERFORMANCE

There are no issues reported at this time.

IX. DESIGNER'S QA/QC

OMR has attended construction meetings and participated in regularly scheduled Project Coordination conference calls.

X. CONTRACTOR'S ENVIRONMENTAL COMPLIANCE

There are no issues to report at this time.

XI. COMMUNITY ISSUES

There are no community issues to report this month.

XII. DESIGNER AND CONTRACTOR MBE/WBE ACTIVITIES

There are no MBE/WBE changes to report at this time

XIII. ISSUES THAT COULD POTENTIALLY RESULT IN ADDITIONAL TIME/COST

There are no issues at this time.

XIV. ANTICIPATED PROBLEMS/CONCERNS AND RECOMMENDED SOLUTIONS

There are no issues at this time.

XV. ATTACHMENTS

- Construction Progress Photos
- Summary Construction Schedule, December 19, 2011
- Current Project Budget Status Report, dated December 31, 2011
- Projected Cash Flow, dated December 31, 2011
- Cumulative Expenditures, dated December 3, 2011

CONSTRUCTION PROGRESS PHOTOS

DECEMBER 2011

Image 1

Removal of brick at Natatorium in preparation for steel attachment.

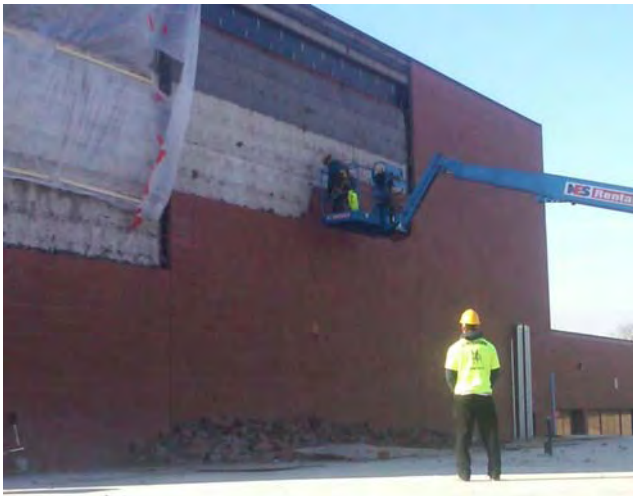


Image 2

Slab finishing at Area b



Image 3

Roofing work at light monitor under way



Image 4

Steel column erection at gym



Image 5

Exterior sheathing at Area C



Image 6

Plumbing at restrooms under way



Image 7

Ductwork received on site, ready for installation



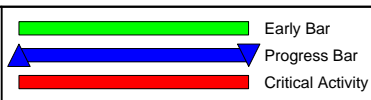
Image 8

Radiant piping installation



Activity ID	Activity Description	Orig Dur	Rem Dur	Early Start	Early Finish	AREA	BDPK	LEVL	TYPE	BLDG	Gantt Chart																							
0																																		
4000	BUILDING B & C	432*	308*	01JUN11A	12FEB13	SUM	000		CON	SUM	BUILDING B & C																							
4050B	DETAIL STEEL AND DECKING B & A	51*	30*	26OCT11A	10JAN12	GEN	05A	GEN	CON	B	DETAIL STEEL AND DECKING B & A																							
4045.23B	ERECT STR STL -SQ 23 RF COL R3 - R10 +CP TO CR	1	1	23NOV11A	28NOV11	GEN	05A		CON	B	ERECT STR STL -SQ 23 RF COL R3 - R10 +CP TO CR																							
4045.24B	ERECT STR STL -SQ 24 RF COL C1 - C3 + R10 - R22	1	1	29NOV11	29NOV11	GEN	05A		CON	B	ERECT STR STL -SQ 24 RF COL C1 - C3 + R10 - R22																							
4045.25B	ERECT STR STL -SQ 25 1ST FLR COL R10 - R24	1	1	30NOV11	30NOV11	GEN	05A		CON	B	ERECT STR STL -SQ 25 1ST FLR COL R10 - R24																							
4045.26B	ERECT STR STL -SQ 26 MAIN RF C3-A3 + R1.O - R23	1	1	01DEC11	01DEC11	GEN	05A		CON	B	ERECT STR STL -SQ 26 MAIN RF C3-A3 + R1.O - R23																							
4045.27B	ERECT STR STL -SQ 27 MAIN RF 22 - 23.5 + A-E	1	1	02DEC11	02DEC11	GEN	05A		CON	B	ERECT STR STL -SQ 27 MAIN RF 22 - 23.5 + A-E																							
4045.28B	ERECT STR STL -SQ 28 MAIN RF 3.5 - 6.1	1	1	05DEC11	05DEC11	GEN	05A		CON	B	ERECT STR STL -SQ 28 MAIN RF 3.5 - 6.1																							
4045.29B	ERECT STR STL -SQ 29 MAIN RF 6.1 - 14.1	1	1	06DEC11	06DEC11	GEN	05A		CON	B	ERECT STR STL -SQ 29 MAIN RF 6.1 - 14.1																							
4045.30B	ERECT STR STL -SQ 30 GYM RF FR G6 TO D7D + 6.5 -	1	1	07DEC11	07DEC11	GEN	05A		CON	B	ERECT STR STL -SQ 30 GYM RF FR G6 TO D7D + 6.5 -																							
4045.31B	ERECT STR STL -SQ 31 MAIN EXIST RF C-D7 + 6-11	1	1	08DEC11	08DEC11	GEN	05A		CON	B	ERECT STR STL -SQ 31 MAIN EXIST RF C-D7 + 6-11																							
4045.33A	ERECT STR STL -SQ 33 MAIN RF 4-6 + C7 - C	1	1	09DEC11	09DEC11	GEN	05A		CON	A	ERECT STR STL -SQ 33 MAIN RF 4-6 + C7 - C																							
4050.33A	DETAIL STR STEEL -SEQ 33A-39A	20	20	12DEC11	10JAN12	GEN	05A		CON	A	DETAIL STR STEEL -SEQ 33A-39A																							
4252.RB	FRP CONCRETE PADS FOR MECH UNITS	5	5	11JAN12	17JAN12	EXT	03A	LRF	CON	B	FRP CONCRETE PADS FOR MECH UNITS																							
4254.RB	ROOF CURBS, BLDG FOR EF	4	4	18JAN12	23JAN12	EXT	23A	LRF	CON	B	ROOF CURBS, BLDG FOR EF																							
4256.RB	FLAT ROOFING, BLDG B AUDITORIUM	10	10	24JAN12	06FEB12	EXT	07C	LRF	CON	B	FLAT ROOFING, BLDG B AUDITORIUM																							
4355.1BA	SPRAY FIREPROOFING HIGH - AUD	5	5	07FEB12	13FEB12	1BA	07D	L01	CON	B	SPRAY FIREPROOFING HIGH - AUD																							
4354.1BA	OH ROOF DRAINS AND LEADERS /TEST - AUD	10	10	14FEB12	27FEB12	1BA	22A	L01	CON	B	OH ROOF DRAINS AND LEADERS /TEST - AUD																							
4350.1BA	AUDITORIUM @ BLDG	239*	239*	14FEB12	22JAN13	1BA	99A	L01	CON	B	AUDITORIUM @ BLDG																							
4352.1BA	FRAME PERIMETER WALLS - AUDITORIUM	25	25	28FEB12	02APR12	1BA	09J	L01	CON	B	FRAME PERIMETER WALLS - AUDITORIUM																							
4370.1BA	IN WALL ELECTRIC - AUDITORIUM	6	6	03APR12	10APR12	1BA	26A	L01	CON	B	IN WALL ELECTRIC - AUDITORIUM																							
4372.1BA	IN WALL INSPECTION - AUDITORIUM	4	4	11APR12	16APR12	1BA	26A	L01	CON	B	IN WALL INSPECTION - AUDITORIUM																							
4374.1BA	BOARD PERIMETER WALLS - AUDITORIUM	15	15	17APR12	07MAY12	1BA	09J	L01	CON	B	BOARD PERIMETER WALLS - AUDITORIUM																							
4380.1BA	FIELD MEASURE MILLWORK - AUDITORIUM	2	2	08MAY12	09MAY12	1BA	06B	L01	CON	B	FIELD MEASURE MILLWORK - AUDITORIUM																							
4384.1BA	FAB & DEL MILLWORK - AUD STAGE / PROC	40	40	10MAY12	06JUL12	1BA	06B	L01	CON	B	FAB & DEL MILLWORK - AUD STAGE / PROC																							
4410.1BA	INSTALL MILLWORK WD WALL PANELS - AUDITORIUM	25	25	09JUL12	10AUG12	1BA	06B	L01	CON	B	INSTALL MILLWORK WD WALL PANELS																							
4414.1BA	MILLWORK FIELD MEAS ACOUSTIC WALL PANEL - AUD	2	2	20JUL12	23JUL12	1BA	06B	L01	CON	B	MILLWORK FIELD MEAS ACOUSTIC WALL																							
4418.1BA	FAB & DEL ACOUST WALL PANELS - AUD	25	25	24JUL12	27AUG12	1BA	09C	L01	CON	B	FAB & DEL ACOUST WALL PANELS - A																							
4432.1BA	INSTALL ACCOUST WALL PNLS - AUDITORIUM	20	20	28AUG12	25SEP12	1BA	06B	L01	CON	B	INSTALL ACCOUST WALL PNLS - AU																							
4428.1BA	PAINT FLOOR - AUDITORIUM	5	5	26SEP12	02OCT12	1BA	09I	L01	CON	B	PAINT FLOOR - AUDITORIUM																							
4434.1BA	INSTALL SEATS - AUDITORIUM	10	10	03OCT12	16OCT12	1BA	11F	L01	CON	B	INSTALL SEATS - AUDITORIUM																							
4438.1BA	HOOK UP LIGHTS ON SEATING	2	2	17OCT12*	18OCT12	1BA	26A	L01	CON	B	HOOK UP LIGHTS ON SEATING																							

Start Date 17MAY10
 Finish Date 01NOV13
 Data Date 28NOV11
 Run Date 19DEC11 09:52



L13R
 Sheet 1 of 2
 GILBANE BUILDING COMPANY (L13R)
 LONGMEADOW HIGH SCHOOL
 LT-03 TOTAL FLOAT / ES



critical path/ adjusted logic due to snow			
Date	Revision	Checked	Approved

Longmeadow High School - Longmeadow, MA

Total Project Budget Status Report

December 31, 2011

Description	Total Project Budget	Authorized Changes	Revised Total Budget	Total Committed	% Cmtd to Date	Actual Spent to Date	% Spent to Date	Projected Expenditures/Commitments	Balance To Spend	Comments
ADMINISTRATION										
Legal Fees										
Owner's Project Manager	\$ 1,862,000	\$ -	\$ 1,862,000	\$ 1,862,000	100%	\$ 837,500	45%	\$ -	\$ 1,024,500	
Programming										
Feasibility Study/Schematic Design	\$ 200,000		\$ 200,000	\$ 200,000	100%	\$ 200,000	100%	\$ -	\$ -	
Design Development										
Construction Contract Documents	\$ 301,500	\$ -	\$ 301,500	\$ 301,500	100%	\$ 301,500	100%	\$ -	\$ -	
Bidding										
Construction Contract Administration	\$ 1,360,500		\$ 1,360,500	\$ 1,360,500	100%	\$ 336,000	25%		\$ 1,024,500	
Closeout										
Extra Services										
Reimbursable Services	\$ -		\$ -	\$ -		\$ -		\$ -	\$ -	
Other Project Manager Costs				\$ -						
Advertising (and printing)	\$ 80,000		\$ 80,000	\$ 39,180	49%	\$ 39,180	49%	\$ -	\$ 40,820	
Permits	\$ -	\$ -	\$ -	\$ -		\$ -		\$ -	\$ -	
Owner's Insurance	\$ -									
Other Administrative Costs	\$ 15,000		\$ 15,000	\$ 8,006	53%	\$ 8,006	53%	\$ -	\$ 6,994	
SUB-TOTAL	\$ 1,957,000	\$ -	\$ 1,957,000	\$ 1,909,186	98%	\$ 884,686	45%	\$ -	\$ 1,072,314	
ARCHITECTURE & ENGINEERING										
A/E Basic Services	\$ 5,285,000	\$ -	\$ 5,285,000	\$ 5,285,000	100%	\$ 3,991,419	76%	\$ -	\$ 1,293,581	
Programming										
Feasibility Study	\$ 195,000		\$ 195,000	\$ 195,000	100%	\$ 195,000	100%	\$ -	\$ -	
Schematic Design	\$ 305,000		\$ 305,000	\$ 305,000	100%	\$ 305,000	100%	\$ -	\$ -	
Design Development	\$ 1,244,050	\$ -	\$ 1,244,050	\$ 1,244,050	100%	\$ 1,244,055	100%	\$ -	\$ (5)	
Construction Contract Documents	\$ 1,796,900	\$ -	\$ 1,796,900	\$ 1,796,900	100%	\$ 1,796,900	100%	\$ -	\$ -	
Bidding	\$ 158,550	\$ -	\$ 158,550	\$ 158,550	100%	\$ 158,550	100%	\$ -	\$ -	
Construction Contract Administration	\$ 1,420,500	\$ -	\$ 1,420,500	\$ 1,420,500	100%	\$ 291,913	21%	\$ -	\$ 1,128,587	
Closeout	\$ 165,000	\$ -	\$ 165,000	\$ 165,000	100%	\$ -	0%	\$ -	\$ 165,000	
Extra and Reimbursable Services	\$ 367,116	\$ 22,464	\$ 389,580	\$ 377,987	97%	\$ 307,023	79%	\$ -	\$ 82,557	
Printing (and other)	\$ 20,000	\$ (20,000)	\$ -	\$ -	-	\$ -	-	\$ -	\$ -	
Hazardous Material (incl. monitoring)	\$ 125,000		\$ 125,000	\$ 120,402	96%	\$ 77,517	62%	\$ -	\$ 47,483	
Geotechnical	\$ 100,000	\$ 37,899	\$ 137,899	\$ 137,899	100%	\$ 120,160	87%	\$ -	\$ 17,739	
Site Survey	\$ 51,040	\$ 4,565	\$ 55,605	\$ 55,605	100%	\$ 45,265	81%	\$ -	\$ 10,340	
Other Reimbursable Costs	\$ 50,000		\$ 50,000	\$ 49,781	100%	\$ 49,781	100%	\$ -	\$ 219	
Traffic Consultants	\$ 21,076		\$ 21,076	\$ 14,300	68%	\$ 14,300	68%	\$ -	\$ 6,776	
Other		\$ -		\$ -	0%	\$ -		\$ -	\$ -	
SUB-TOTAL	\$ 5,652,116	\$ 22,464	\$ 5,674,580	\$ 5,662,987	100%	\$ 4,298,441	76%	\$ -	\$ 1,376,139	

Longmeadow High School - Longmeadow, MA

Total Project Budget Status Report **December 31, 2011**

Description	Total Project Budget	Authorized Changes	Revised Total Budget	Total Committed	% Cmt'd to Date	Actual Spent to Date	% Spent to Date	Projected Expenditures/Commitments	Balance To Spend	Comments
CONSTRUCTION COSTS										
CM at Risk Preconstruction Services	\$ 100,000	\$ 25,840	\$ 125,840	\$ 125,840	100%	\$ 119,548	95%		\$ 6,292	
Construction	\$ 63,773,971	\$ -	\$ 63,773,971	\$ 63,770,334	100%	\$ 13,969,975	22%	\$ -	\$ 49,803,996	
Change Orders	\$ -	\$ 394,629	\$ 394,629	\$ 394,629		\$ -				
SUB-TOTAL	\$ 63,873,971	\$ 420,469	\$ 64,294,440	\$ 64,290,803	100%	\$ 14,089,523	22%	\$ -	\$ 49,810,288	
MISCELLANEOUS PROJECT COSTS										
Hazmat Monitoring & Testing	\$ -	\$ -	\$ -	\$ -		\$ -		\$ -	\$ -	
Material Testing	\$ 120,000	\$ -	\$ 120,000	\$ 75,000	63%	\$ 38,557	32%	\$ -	\$ 81,443	
Reproduction/Mailing	\$ -	\$ -	\$ -	\$ -		\$ -		\$ -	\$ -	
Moving; Utility Co. Fees & Other Proj.	\$ 30,000	\$ -	\$ 30,000	\$ 20,040	67%	\$ 20,040	67%	\$ -	\$ 9,960	
SUB-TOTAL	\$ 150,000	\$ -	\$ 150,000	\$ 95,040	63%	\$ 58,597	39%	\$ -	\$ 91,403	
FURNISHINGS & EQUIPMENT										
Furnishings (inc Maint Equip, Library Books)	\$ 1,645,102	\$ -	\$ 1,645,102	\$ -	0%	\$ -	0%	\$ -	\$ 1,645,102	
Computer Equipment	\$ 1,197,000	\$ -	\$ 1,197,000	\$ -	0%	\$ -	0%	\$ -	\$ 1,197,000	
SUB-TOTAL	\$ 2,842,102	\$ -	\$ 2,842,102	\$ -	0%	\$ -	0%	\$ -	\$ 2,842,102	
CONTINGENCY										
Construction Contingency	\$ 3,193,699	\$ (394,629)	\$ 2,799,070						\$ 2,799,070	
Owner's Contingency	\$ 784,000	\$ (48,304)	\$ 735,696						\$ 735,696	
SUB-TOTAL	\$ 3,977,699	\$ (442,933)	\$ 3,534,766	\$ -	0%	\$ -	0%	\$ -	\$ 3,534,766	
TOTAL PROJECT BUDGET	\$ 78,452,888	\$ -	\$ 78,452,888	\$ 71,958,016	91.7%	\$ 19,331,248	24.6%	26.9%	\$ 58,727,011	

(sum of all sub-totals above)

FUNDING SOURCES	Total Project Budget	Exclusions	Basis of Total Facilities Grant	Reimbursement Rate	MSBA Share
State Share	\$ 34,004,658				
Local Share	\$ 44,448,230	\$ 12,857,483	\$ 65,595,405	51.84%	\$ 34,004,658
Grants					
SUB-TOTAL	\$ 78,452,888				

CONSTRUCTION COST ESTIMATES	Date	Amount	SF	Cost Per SF
DG Jones	9/30/09	\$63,795,164	240,000	\$266
DG Jones	02/10/10	\$63,773,971	237,000	\$269
DG Jones	11/09/10	\$64,709,044	237,000	\$273

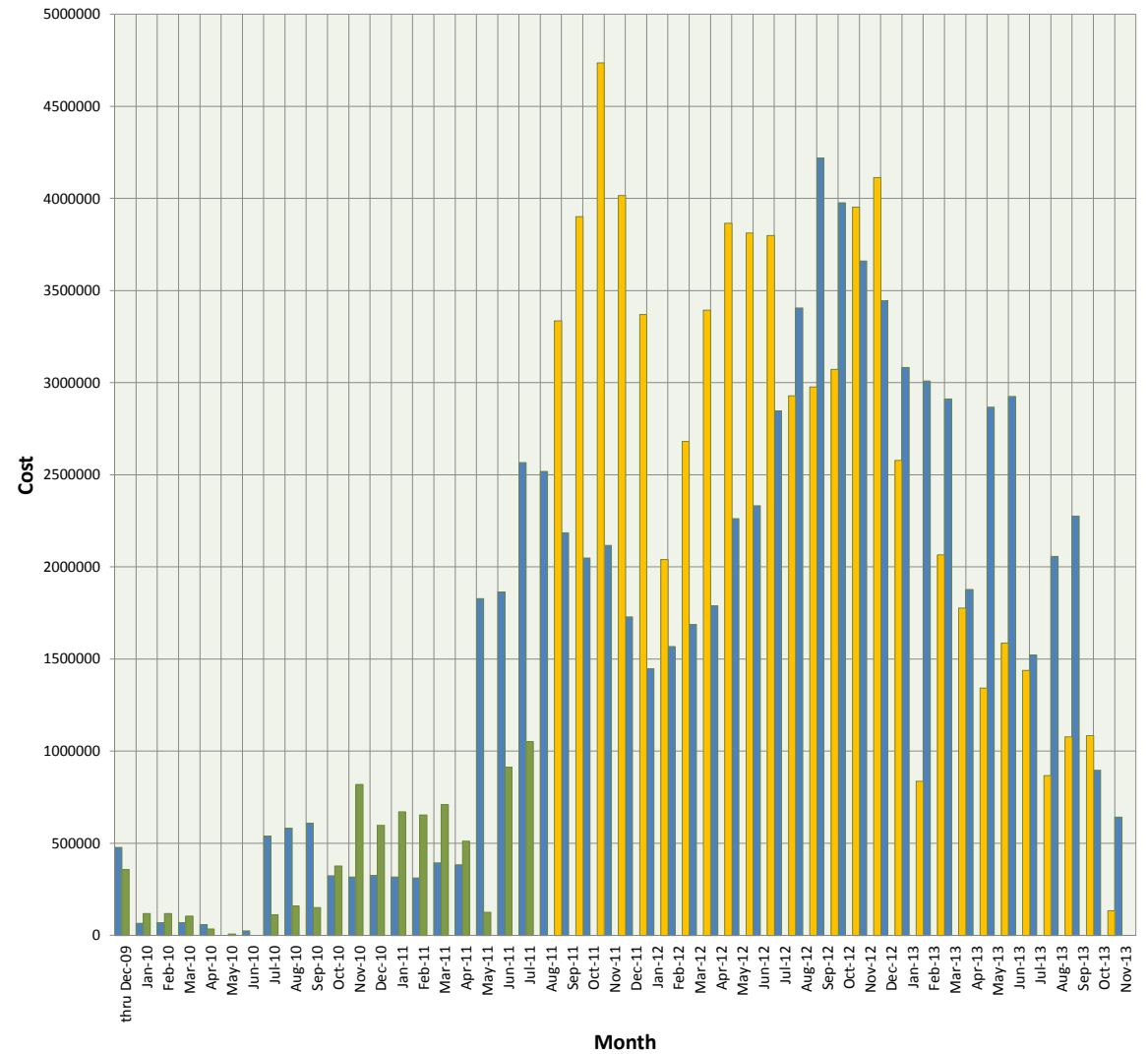
Longmeadow HS: Longmeadow, MA

Projected Cash Flow
Updated 12/31/2011

CASH FLOW - PROJECT EXPENDITURES

	Original	Actual	Projected
thru Dec-09	\$ 477,565	\$ 358,365	
Jan-10	\$ 67,000	\$ 119,199	
Feb-10	\$ 69,500	\$ 118,627	
Mar-10	\$ 70,343	\$ 105,392	
Apr-10	\$ 58,750	\$ 35,259	
May-10	\$ -	\$ 8,750	
Jun-10	\$ 25,000	\$ -	
Jul-10	\$ 540,409	\$ 111,743	
Aug-10	\$ 583,367	\$ 160,745	
Sep-10	\$ 609,892	\$ 152,001	
Oct-10	\$ 323,927	\$ 378,174	
Nov-10	\$ 316,850	\$ 820,717	
Dec-10	\$ 326,850	\$ 598,688	
Jan-11	\$ 316,850	\$ 671,562	
Feb-11	\$ 311,850	\$ 654,327	
Mar-11	\$ 394,125	\$ 711,524	
Apr-11	\$ 384,126	\$ 512,520	
May-11	\$ 1,828,233	\$ 125,430	
Jun-11	\$ 1,865,094	\$ 914,342	
Jul-11	\$ 2,566,942	\$ 1,052,376	
Aug-11	\$ 2,519,191	\$ 3,135,589	
Sep-11	\$ 2,185,758	\$ 1,798,355	
Oct-11	\$ 2,048,540	\$ 2,331,781	
Nov-11	\$ 2,117,505	\$ 1,955,734	
Dec-11	\$ 1,730,087	\$ 2,494,018	
Jan-12	\$ 1,447,154	\$ 3,421,156	
Feb-12	\$ 1,568,222	\$ 4,311,681	
Mar-12	\$ 1,689,290	\$ 4,349,989	
Apr-12	\$ 1,789,931	\$ 4,822,773	
May-12	\$ 2,262,097	\$ 4,119,643	
Jun-12	\$ 2,332,935	\$ 4,100,958	
Jul-12	\$ 2,847,193	\$ 3,029,733	
Aug-12	\$ 3,406,310	\$ 3,076,990	
Sep-12	\$ 4,219,211	\$ 3,072,369	
Oct-12	\$ 3,977,074	\$ 3,956,744	
Nov-12	\$ 3,660,094	\$ 4,138,698	
Dec-12	\$ 3,445,695	\$ 2,578,951	
Jan-13	\$ 3,082,490	\$ 836,687	
Feb-13	\$ 3,009,850	\$ 2,066,428	
Mar-13	\$ 2,912,996	\$ 1,773,897	
Apr-13	\$ 1,877,674	\$ 1,438,278	
May-13	\$ 2,867,026	\$ 1,624,609	
Jun-13	\$ 2,925,995	\$ 1,622,133	
Jul-13	\$ 1,522,637	\$ 1,388,180	
Aug-13	\$ 2,057,153	\$ 1,381,206	
Sep-13	\$ 2,275,717	\$ 1,101,265	
Oct-13	\$ 896,612	\$ 790,420	
Nov-13	\$ 641,777	\$ -	
Total:	\$ 78,452,888	\$ 19,325,218	\$ 59,004,049

Projected Cash Flow - Project Expenditures



Longmeadow HS: Longmeadow, MA

Cumulative Expenditures

Updated 12/31/2011

CASH FLOW - PROJECT EXPENDITURES

	Original	Actual	Projected
thru Dec-09	\$ 477,565	\$ 358,365	
Jan-10	\$ 544,565	\$ 477,564	
Feb-10	\$ 614,065	\$ 596,191	
Mar-10	\$ 684,408	\$ 701,583	
Apr-10	\$ 743,158	\$ 736,842	
May-10	\$ 743,158	\$ 745,592	
Jun-10	\$ 768,158	\$ 745,592	
Jul-10	\$ 1,308,567	\$ 857,335	
Aug-10	\$ 1,891,934	\$ 1,018,080	
Sep-10	\$ 2,501,826	\$ 1,170,081	
Oct-10	\$ 2,825,753	\$ 1,548,255	
Nov-10	\$ 3,142,603	\$ 2,368,972	
Dec-10	\$ 3,469,453	\$ 2,967,660	
Jan-11	\$ 3,786,303	\$ 3,639,222	
Feb-11	\$ 4,098,153	\$ 4,293,549	
Mar-11	\$ 4,492,278	\$ 5,005,073	
Apr-11	\$ 4,876,404	\$ 5,517,593	
May-11	\$ 6,704,637	\$ 5,643,022	
Jun-11	\$ 8,569,731	\$ 6,557,364	
Jul-11	\$ 11,136,673	\$ 7,609,741	
Aug-11	\$ 13,655,864	\$ 10,745,330	
Sep-11	\$ 15,841,622	\$ 12,543,685	
Oct-11	\$ 17,890,162	\$ 14,875,466	
Nov-11	\$ 20,007,668	\$ 16,831,200	
Dec-11	\$ 21,737,755	\$ 19,325,218	
Jan-12	\$ 23,184,909	\$ 22,746,375	
Feb-12	\$ 24,753,130	\$ 27,058,055	
Mar-12	\$ 26,442,420	\$ 31,408,044	
Apr-12	\$ 28,232,352	\$ 36,230,817	
May-12	\$ 30,494,449	\$ 40,350,460	
Jun-12	\$ 32,827,384	\$ 44,451,418	
Jul-12	\$ 35,674,577	\$ 47,481,151	
Aug-12	\$ 39,080,887	\$ 50,558,141	
Sep-12	\$ 43,300,098	\$ 53,630,509	
Oct-12	\$ 47,277,172	\$ 57,587,253	
Nov-12	\$ 50,937,266	\$ 61,725,952	
Dec-12	\$ 54,382,961	\$ 64,304,902	
Jan-13	\$ 57,465,451	\$ 65,141,589	
Feb-13	\$ 60,475,301	\$ 67,208,017	
Mar-13	\$ 63,388,297	\$ 68,981,913	
Apr-13	\$ 65,265,970	\$ 70,420,191	
May-13	\$ 68,132,996	\$ 72,044,800	
Jun-13	\$ 71,058,991	\$ 73,666,933	
Jul-13	\$ 72,581,628	\$ 75,055,113	
Aug-13	\$ 74,638,781	\$ 76,436,319	
Sep-13	\$ 76,914,499	\$ 77,537,584	
Oct-13	\$ 77,811,111	\$ 78,328,004	
Nov-13	\$ 78,452,888	\$ -	

